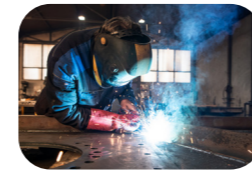
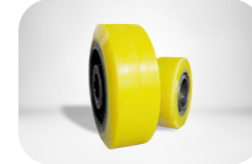


The battery powered transfer car (CTC)



Structure

The car frame material is S235&S275 JR It is formed by welding the section steel and steel plate together. The section steel, served as the car's longitudinal and horizontal beams, is welded under the table and form the grid frame. This kind of design has the advantages of heavy carrying capacity and making the table bear equivalent force. For the convenience of shipping, lifting holes are set at both sides.



Wheels

We provide the Polyurethane solid wheels for the CTC series transfer car. This kind of wheels are sturdy, firm and do no damage to the ground. There are two fixed wheels for the drive wheels of the transfer car. The driven wheels are the swivel wheel. The trackless can realize 360° turning with small radius. About the turning mechanism, it can turn as working or at original place as following picture.



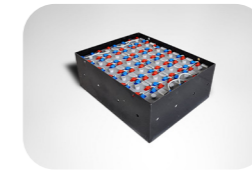
Alarm light

The alarm light installed on the transfer car mainly is small sound and light lamps with quality material, It is bright and alert when the car running. The color and the type can be customized.



Area scanner

The area scanner is Diffuse reflection photoelectric switch. It mainly are used for detect obstacle and pedestrians. Due to the distance of the detection is long enough, these trolleys which has installed will have enough cushion to stop. With the assistance of electrical, the switch can work automatically and stably with the system. The switch has high protection level of IP-66, which makes the switch available in almost all the environment.



Battery

a) The trackless transfer car is equipped with the maintenance-free lead acid battery. It doesn't need maintenance at the whole service life.
b) The battery capacity is depend on the car load capacity. It can run 4-6 hours when full-load and just need 6-8 hours for charging. When it is left 30% power, it will need 4 h to charge full.
c) The service life of the battery is 3-4 years with normal use, or you can charge 1200 -1500 times for using.



Pendant

The transfer car is equipped with the pendant to operate the start, stop, move forward and move backward. The pendant can be also called the wired remote controller.



Remote Controller

The remote controller controls the car without wire. The function of the remote controller is same as the pendant. It is very efficient and convenient.



Buffer

The buffer is used to protect the body of the transfer car from colliding with hard objects (such as wall or other vehicle). There are two types buffer as below. the first one is the simple spring buffer, the another one is the welding on the cart body.

Parameter

Model	CTC-5 T	CTC-20 T	CTC-30 T	CTC-40 T	CTC-50 T
Rated Load(t)	5	20	30	40	50
Safety factor	1,25				
Ground requirement	Cement floor or Steel plate ground				
Ground clearance(mm)	50	50	50	50	50
Table size (mm)	3000*2000	4500*2200	5000*2200	5500*2200	6000*2300
Height of the whole car (mm)	450	600	650	700	700
Wheel base (mm)	1500	1700	1700	1800	1800
Turning radius (mm)	2550	3950	4350	4850	5250
Motor power (KW)	3,5	7	10	12	15
Wheel diameter (mm)	300 (4)	400 (4)	400 (4)	500 (4)	500 (4)
Running speed (m min)	0-20				
Battery model	D-250- 24 pcs	D-440-24 pcs	D-250-36 pcs	D-330-36 pcs	D-250-36 pcs
Charging time	8 hours,using time 4 hours,charge voltage: 220 v				
Battery maintenance	Free of maintenance				
Colour	Yellow				

SPECIAL PRODUCTION UP TO 150 TONS ACCORDING TO CUSTOMER REQUESTS.

Feature

- a) It can turn 360 degree on the cement floor with a small turning radius.
- b) The running distance is un limited and can meet different demands on various occasions.

- c) Anti-high temperature, Anti-high explosion;
- d) Convenient to shipment with lifting holes;
- e) Stable start, big starting power, long life time



Operation

- 1) Turn on the power switch, and cancel the E-stop (turn it clockwise), then the light turns green and voltmeter works. (Please pay attention to the emergency stop buttons mounted on the car)
- 2) Please turn the selector switch to hand held control mode or remote control mode.

- 3) Take out hand held pendant or remote control.
- 4) After operation, please note that press the "E-stop" button on electrical box and turn off the power.